

1987

awards listed

19h30 à 21h00  
La Réserve Banquet - Remises des prix/  
Banquet - Awards presentation

21h00 à 24h00  
La Réserve French Cancan et danse/  
Entertainment: French Cancan - Dancing

**VENDREDI, LE 15 MAI  
FRIDAY, MAY 15**

7h30 à 9h30 Petit déjeuner - Suite Hospitalité  
(Café et pâtisserie)/  
Breakfast - Hospitality Suite  
(Coffee and pastries)

9h30 à 13h00 Visite guidée de Chicoutimi  
Cocktail et parade de mode/  
Guided tour in downtown Chicoutimi  
Fashion show with cocktail

13h30 à 18h00 Départ par autobus pour Ste-Rose du Nord  
avec une croisière sur le Saguenay  
(Tenue sport - gilets)/  
Departure by bus to Ste-Rose du Nord to  
board "La Marjolaine" for a cruise on the  
Saguenay (sweaters, sportswear and jackets)  
**Bon voyage et au revoir.**

**EXÉCUTIF DE LA SOCIÉTÉ/  
SOCIETE OFFICERS**

Frédorick H. Kohloss Président / President

H.E. Burroughs Président-élu/President-elect  
Louis F. Flagg Vice-président/Vice-president  
David S. Butter Vice-président/Vice-president  
Thomas S. Brown Trésorier/Treasurer  
Frank M. Coda Secrétaire/Secretary

**EXÉCUTIF DE LA RÉGION II/OFFICERS**

Geroge W. Buckler Directeur régional/Chairman  
Darryl K. Boyce Éducation/Education  
Azarias Servant Gestion de l'énergie/Energy management  
Ray G. Young Recrutement/Membership  
W.H. (Bill) Chadwick Fonds de recherche/Resarch promotion  
Philip Landray Substitut au comité de nomination/  
Nominating committee alternate  
George Carscallen Membre au comité de nomination/  
Nominating committee member  
George E. Menzies Directeur Régional des conférences /  
Regional Program chairman  
John H. Fox Archiviste régional/Regional Historian

**DELEGATES AND ALTERNATES/  
DÉLÉGUÉS ET SUBSTITUTS**

HAMILTON  
Cliff Schemmer Délégué/Delegate  
W. Gary Romagnoli Substitut/Alternate

HALIFAX  
Gary Scott Délégué/Delegate  
Ian Ross Substitut/Alternate

LONDON - ONTARIO  
John Kenney Délégué/Delegate  
Peter Golem Substitut/Alternate

MONTREAL  
Fred Krumreich Délégué/Delegate  
Elie Shama Substitut/Alternate

NEW BRUNSWICK  
Irwin McDonald Délégué/Delegate  
Gerry Waselynychuk Substitut/Alternate

OTTAWA VALLEY  
Simon Jol Délégué/Delegate  
Paul B. Baker Substitut/Alternate

QUÉBEC  
Robert Marcotte Délégué/Delegate  
Jean-Luc Morin Substitut/Alternate

SAGUENAY LAC ST-JEAN  
Daniel Boivin Délégué/Delegate  
Donis Rivard Substitut/Alternate

TORONTO  
J. Ovens Délégué/Delegate  
H. Wheatley Substitut/Alternate

WINDSOR  
Lon Panontin Délégué/Delegate  
C. Hales Substitut/Alternate

**COMITÉ DU CONGRÈS/  
CONFÉRENCE COMMITTEE**

Glenn Parks Président/Chairman  
Jean Rock Gagnon Vice-président/Vice-Chairman  
Angelo Pilote Secrétaire/Secretary  
Camil Girard Trésorier/Finance  
Lambert Tremblay Suite hospitalité et transport/  
Hospitality room and transportation  
Camil Girard Conférence techniques/Technical programs  
Roger Perron Inscription/Registration  
Jean-Rock Gagnon Publicité/Publicity  
France Tremblay Activités Sociales/  
Social fonctions committee  
Jean-Rock Gagnon Programme pour les compagnes/  
Ladies program

**INFORMATION GÉNÉRALE/  
GENERAL INFORMATION**

**COUT D'INSCRIPTION POUR LES MEMBRES  
ASHRAE/  
REGISTRATION COST FOR ASHRAE MEMBERS**

Avant le 31 mars 1987/Before march 31, 1987

Membre accompagné/Accompanate member 130,00\$  
Membre non accompagné / 75,00\$  
Unaccompagne member

Après le 31 mars 1987/After march 31, 1987

Membre accompagné/Accompanate member 150,00\$  
Membre non accompagné/ 90,00\$  
Unaccompagne member

Lequel comprend les activités suivantes:

Coût pour chaque activité:/  
Which includes the following:  
Separate costs:

Cocktail du mercredi/Wednesday cocktail 12,00\$  
Petit déjeuner du jeudi/Thursday breakfast 6,00\$  
Dîner du président/Présidential luncheon 20,00\$  
Banquet du jeudi/Thursday dinner and entertainment 40,00\$  
Petit déjeuner du vendredi/Friday breakfast 6,00\$  
Dîner du vendredi/Friday meal (noon) 12,00\$  
Visite du vendredi/Friday visit 15,00\$  
(incluant la parade de mode, cocktail, diner, etc...)  
(including fashion show, cocktail, dinner, etc...)  
Cruisière sur le Saguenay/Cruise on Saguenay Fjord 25,00\$  
136,00

Retourner votre chèque pour le paiement de votre inscription à:  
Forward cheque for registration and additional tickets to:

Glenn Parks, président du C.R.C. 87/C.R.C. 87 chairman  
526, Marcel Portal  
Chicoutimi, (Qc)  
G7J 4P2

(nous vous demandons d'honorer les dates d'inscriptions s.v.p.)/  
(please honour date restrictions)

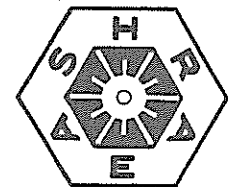
Pour la réservation de la chambre d'hôtel, utiliser la carte  
d'inscription ou téléphoner directement à l'hôtel pour prendre les  
arrangements. /  
For hotel reservations, use preprinted hotel card or call hotel  
directly and arrange payment.

ASHRAE

**30e Congrès Régional  
des chapitres  
30th Annual C.R.C.**

RÉGION II

AMERICAN SOCIETY  
OF  
HEATING,  
REFRIGERATING  
AND  
AIR-CONDITIONING  
ENGINEERS, INC.



13, 14, 15 mai 1987

Hôtel-Motel Le Montagnais  
Chicoutimi  
Québec  
Canada

Directeur du Congrès/C.R.C. Chairman  
Glenn Parks

**PROGRAMME ASHRAE  
13,14 ET 15 MAI 1987**

**ASHRAE PROGRAM  
MAY 13, 14 AND 15 1987**

**MERCREDI, LE 13 MAI  
WEDNESDAY, MAY 13**

<b>11h00 à 18h00</b> Hall Main lobby	Inscription - (membres et invités) / Registration - (all members & guests)
<b>13h00 à 13h30</b> Salle Totem Totem room	Session d'orientation - (membres et invités) / C.R.C. familiarization (all members and guest)
<b>13h30 à 15h00</b> Salle Totem Totem room	C.R.C. réunions d'affaires / C.R.C. business meeting
<b>15h00 à 15h15</b>	Pause café / Coffee
<b>15h15 à 17h00</b> Salle Totem Totem room	C.R.C réunion d'affaires (continuation) / C.R.C. business meeting (continued)
<b>17h15 à 18h15</b> Salle Totem Totem room	Caucus, délégués et substituts / Caucus (delegates and alternates)
<b>19h30 à 21h00</b>	Cocktail de bienvenue. Maison d'Accueil de Chicoutimi Rendez-vous, Hall à 19h15. / Welcome cocktail Maison d'Accueil de Chicoutimi. Meet 19h15: main lobby.
<b>21h00</b>	Souper libre - Pour tous. / Dinner at restaurant of your choice

**JEUDI, LE 14 MAI  
THURSDAY, MAY 14**

<b>7h30 à 8h30</b> Salle à manger Dining room	Petit déjeuner / Breakfast
<b>8h00 à 15h00</b> Hall Main lobby	Inscription / Registration
<b>8h30 à 10h15</b> Salle Totem Totem room	C.R.C. réunion d'affaires (continuation) / C.R.C. business meeting (continued)

<b>10h15 à 10h30</b>	Pause café / Coffee
<b>10h30 à 11h30</b> Salle Totem Totem room	C.R.C. réunion de l'exécutif (délégués et substituts) / Executive session (delegates and alternates)
<b>11h45 à 12h15</b> Salle La Réserve La Réserve room	Réception / Reception (cash bar)
<b>12h15 à 14h30</b> Salle La Réserve La Réserve room	Dîner du président (Tous les membres et invités) / President's luncheon (all members and guests).
<b>14h30 à 16h30</b> Salle Totem Totem room	Atelier traitant du fonctionnement des chapitres (délégués, substituts et membres). / Chapter operations workshop (all chapter members - delegates and alternates)
<b>16h30 à 17h00</b> Salle Totem Totem room	Fin des réunions d'affaires / Close of business sessions
<b>17h00 à 18h00</b>	Suite Hospitalité / Hospitality Suite
<b>18h30 à 19h30</b> Salle La Réserve La Réserve room	Réception / Reception (cash bar)
<b>19h30 à 21h00</b> Salle La Réserve La Réserve room	Banquet - Remises des prix / Banquet - Awards presentation
<b>21h00 à 24h00</b> Salle La Réserve La Réserve room	French Cancan et danse / Entertainment: French Cancan - Dancing

**VENDREDI, LE 15 MAI  
FRIDAY, MAY 15**

<b>7h00 à 8h00</b> Salle à manger Dining room	Petit déjeuner / Breakfast
<b>8h00 à 9h45</b>	<b>Premier atelier / First workshop session</b>
<b>Totem 1</b>	1. Gestion d'énergie / Energy management

<b>Totem 2</b>	2. Education / Education
<b>Tente</b>	3. Recrutement / Membership
<b>Wigwan</b>	4. Archivistes / Historians
<b>9h45 à 10h00</b>	5. Affaires gouvernementales / Gov't. Affairs
<b>10h00 à 11h45</b>	<b>Deuxième atelier / Second workshop session</b>
<b>Totem 1</b>	1. Gestion d'énergie / Energy management
<b>Tipi</b>	2. Recrutement / Membership
<b>Totem 2</b>	3. Conférence / Chapter programs
<b>Tente</b>	4. Fonds de recherche / Research promotion
<b>Wigwan</b>	5. "R" dans ASHRAE / "R" in ASHRAE
<b>12h00 à 13h00</b> Salle La Réserve La Réserve room	Dinner / Luncheon
<b>13h30 à 18h00</b>	Départ par autobus pour Ste-Rose du Nord Séance d'étude technique et récapitulation à bord de "La Marjolaine". (Tenue sport et gilets) / Departure by bus for Ste-Rose du Nord. Technical session & informal closing on board "La Marjolaine" during cruise on Saguenay Fjord (sweaters, sportswear, jackets). <b>Bon voyage et au revoir.</b>

**PROGRAMME POUR LES COMPAGNES  
LADIES' PROGRAM**

**MERCREDI, LE 13 MAI  
WEDNESDAY, MAY 13**

<b>11h00 à 18h00</b> Hall Main lobby	Inscription / Registration
<b>13h00 à 13h30</b> Salle Totem Totem room	C.R.C. session d'orientation / C.R.C. familiarization
<b>19h30 à 21h00</b>	Cocktail de bienvenue Maison d'Accueil de Chicoutimi Rendez-vous: Hall à 19h15 / Welcome cocktail Meet 19h15 main lobby
<b>21h00</b>	Souper libre / Dinner at restaurant of your choice

**JEUDI, LE 14 MAI  
THURSDAY, MAY 14**

<b>8h30 à 9h30</b>	Petit déjeuner - Suite Hospitalité (Café et pâtisserie) / Breakfast - Hospitality Suite (Coffee and pastries)
<b>10h00 à 11h45</b>	Visite des arts avec J.R.Gagnon / Art visit with J.R. Gagnon
<b>11h45 à 12h15</b> La Réserve	Réception / Reception (cash bar)
<b>12h15 à 14h30</b> La Réserve	Dîner du président / President's luncheon
<b>14h30 à 17h00</b>	Visite du Haut Saguenay / Visit of "Le Haut Saguenay"
<b>17h00 à 18h00</b>	Suite Hospitalité / Hospitality Suite
<b>18h30 à 19h30</b> La Réserve	Réception / Reception (cash bar)

MINUTES  
30TH ANNUAL REGION 2  
CHAPTERS REGIONAL CONFERENCE  
MAY 13TH, 14TH, 15TH  
1987

HOTEL LEMONTAGNAIS  
CHICOUTIMI, QUEBEC

HOSTED BY SAGUENAY LAC ST. JEAN  
CHAPTER

CRC BUSINESS MEETING

AGENDA

---

1. Call to order
2. Welcome
3. Roll Call
4. Introductions
5. Remarks from Society Officers and Staff
6. Approval of Minutes
7. Resolution Committee
8. Chapters Annual Report
9. Regional Vice-Chairman Reports
10. Regional Chairman's Report
11. Nominating Committee Report
12. Motions and Action Items
13. Old Business
14. New Business
15. Closing Comments.
16. Close of Business Session

REGION 2 30th ANNUAL CHAPTERS' REGIONAL CONFERENCE MAY 13 to 15, 1987

First Business Session

(1) CALL TO ORDER

George Buckler, Regional Chairman opened the meeting at 8:40 a.m. and welcomed all. The meeting was held in the Totem Room, Hotel Montagnais, Chicoutimi, Quebec on Wednesday, May 13, 1987. He thanked Glenn Parks, Conference Chairman along with the various chapter members of Saguenay Lac St. Jean for hosting the convention.

(2) WELCOME

Chairman Buckler welcomed all those present including representatives from the new Mississauga Chapter which will be chartered June 23, 1987. He invited all ASHRAE members to this chartering night.

(3) ROLL CALL

Refer to Appendix "A" for those in attendance. He asked those present to sign the attendance sheet being circulated.

(4) INTRODUCTIONS

Chairman Buckler introduced Frank Coda, Executive Director from Atlanta, H.E. (Barney) Burroughs, Society President-Elect, Paul R. Conrad, Director-at-Large, Glenn Parks, Conference Chairman, John Rock Gagnon, CRC Host Chapter Secretary, Gail Menzies, Recording Secretary. He then asked each Chapter delegate to introduce the various members of his Chapter present at the CRC.

(5) REMARKS FROM SOCIETY OFFICERS AND STAFF

Chairman Buckler introduced Frank Coda from Headquarters in Atlanta, Georgia. Mr. Coda brought greetings from the staff of 80 dedicated employees who work on your behalf, three of this staff are located in Washington, D.C. Later in the Conference, Mr. Coda will elaborate on the changes in Society Council and Committee Structures - see Appendix 1. Also later, Mr. Coda utilized a slide presentation to show how Headquarters organization functions.

Next, Chairman Buckler introduced H.E. (Barney) Burroughs, Society President-Elect, who noted that Region 2 was a two language region, a unique feature in ASHRAE. Mr. Burroughs will deliver his principle remarks at Friday's Awards Luncheon, May 15, 1987.

(6) APPROVAL OF MINUTES

Chairman Buckler asked for the approval of the Minutes of the previous meeting. John Kenney asked that a correction be made as he should have been listed as an Alternate and not Delegate.

Following this correction, and on a motion duly made and seconded the 1986 CRC Minutes were approved.

CARRIED.

PAGE 2.....

) Chairman Buckler asked that all written Resolutions be distributed at this time, since he had received only one set prior to the CRC, that being from the Hamilton Chapter. Ottawa Valley, Toronto and Montreal then distributed their Motions.

(8) CHAPTER ANNUAL REPORTS

Chairman Buckler asked that the Chapters distribute their reports to the various Chapters as well as the Vice-Chairmen and Head Table Guests. Chairman Buckler then asked each Chapter commencing with the Hamilton Chapter to comment on their year's operations with a time limit of five minutes per Chapter. He asked each Chapter for one highlight and one problem area.

CHAPTER REPORTS

HAMILTON CHAPTER: Cliff Schemmer reported they had a good year and much had been learned from the previous CRC. They had used well-qualified technical speakers and also in-house speakers. They are currently reviewing other methods to raise money after a very successful technical-energy seminar where there were 13 exhibitors.

HALIFAX: Gary Scott stated that 1986-87 has been one of rededication. Meeting attendance is up. This chapter is very proud to have received the 1986 Energy award from the Nova Scotia Provincial Department of Mines and Energy for our 1986 PDS Seminar. We are still working on preliminaries for a new chapter in Newfoundland. Considering Newfoundland took 82 years to join confederation, a few years to join ASHRAE is not too long.

LONDON CANADA: John Kenney reported that the highlight of the year was a successfully expanded chapter committees structure. This has resulted in more members being involved especially at a time when the chapter is going to host next year's CRC. The biggest chapter problem is the financing required to enable us to send chapter chairman to CRCs. London is looking forward to hosting the CRC at a new Warton Hotel located in the old armories.

MONTREAL: Elie Shama advised that because of the major increase in student membership costs by the Society, the Montreal Chapter decided to subsidize each student member with \$10.00 US to help defray the radical Society student dues increase. This helped increase student membership from 295 in 1986 to 330 in 1987. The shortcoming for the year was the action results of the Energy Committee. The highlight was the seminar on Hydronics.

NEW BRUNSWICK: Irwin MacDonald reported their principle success was expanding from a purely technical chapter into one with social activities. This had not only attracted new chapter interest but also added to their reserve funds. The principle problem is not explaining duties clearly to incoming chapter officers and chairmen

PAGE 3.....

and also not preparing the delegate and alternate for CRC. This particular chapter could be an ideal location for Society to consider application for the concept of satellite chapters.

OTTAWA VALLEY: Simon Jol reported their biggest problem is how to surpass a very successful previous year. Added to this was a decision by the Executive to change the meeting location from one which was poorly ventilated and noisy, yet was home-base for decades. The new location was not a problem and in fact attendance has increased.

A new title for their newsletter is called the Capital Commique. Their continued success has earned them the Star Award, P.A.O.E. Their strength continues in having a large pool of qualified speakers in the area.

In June 1988, Society will hold the Annual Meeting in Ottawa, CANADA. All Region 2 members are invited to this special event.

QUEBEC: Robert Marcotte reported attendance is up and averages 56 members. There was 108 at the symposium. The biggest weakness is the "R" in ASHRAE committee. They are using the one invoice system from Headquarters which may be hurting chapter membership.

SAGUENAY LAC ST. JEAN: Daniel Boivin reported their highlight is hosting the CRC, but this cost them strength in other chapter activities such as "R" in ASHRAE. It is hoped the CRC will help the new chapter chairmen to better understand their duties. Language is a big problem.

TORONTO: Jim Ovens reported that their biggest problem will be losing the Park Plaza as their meeting place. Also, the new Mississauga Chapter will decrease their assigned membership by about 250. Toronto will continue to have eight technical dinner meetings and three afternoon seminars. They have established a permanent long-term planning committee to prepare a strategic plan for the chapter as we head into the 1990's. Currently, the chapter has an operating deficit of \$5,000.00. The Toronto Chapter is looking forward to its sixty-six year as another successful one.

WINDSOR: Lou Panontin advised that the past year was the fourth year since being chartered, with its research promotion efforts being the best to date. They have already achieved their goal. On the negative side, their attendance is down for the first time and they are hoping the program workshop will give them some ideas to reverse this trend.

They also conducted a recent chapter meeting away from home-base Windsor, in Chatham, Ontario some forty-five miles east where they presented a student banner to the Thames Campus of St. Clair College.



MISSISSAUGA: Lloyd Algie, President-Elect of Region 2 newest chapter, and Historian, told the group that in the late fifties there were no chapters west of Toronto. He then helped charter the Hamilton Chapter 28 years ago and now is involved in another chartering on June 23, 1987 in Mississauga.

To date, the chapter held six meetings and one tour with 36 people at the first meeting. At the moment, the biggest problem is that chapter chairmen do not understand their duties.

President-Elect, Burroughs complimented the chapters on their thorough reports. He told the group that he will utilize these reports as material for the new Society publication, "Insights". He recommended that the delegates take the reports back to their chapters for their chapter chairmen's information.

Chairman Buckler recommended that the chapter rosters be exchanged between chapters and that some effort be made in the next few months to accommodate this request for those who did not supply rosters at this CRC.

SECOND BUSINESS SESSION: 8:40 a.m. Thursday, May 14, 1987

REGIONAL VICE-CHAIRMEN AND COMMITTEE REPORTS:

EDUCATION - Darryl Boyce: This year has been good. Seven out of 10 chapters are above par with six above last year. Student membership is down because of increase costs of the Handbook. Reporting is still a major problem.

MEMBERSHIP - Ray Young: Region 2 is managing a steady growth in new members and retention of old members. The three strong factors affecting membership growth are membership transfers, member delinquents and member resignations. The increase from \$75.00 to \$95.00 US in Society dues effective July, 1987 will no doubt have a negative effect. Lack of communication is still a major problem.

RESEARCH PROMOTION - Bill Chadwick: The goal for research this year is \$75,000.00 an increase of 12% over last year's goal, and some 31% over the collections of last year. Poor delivery of cheques is plaguing totals. Chapters should set up a committee and make contacts early in order to meet goals. An increase of 10-12% will be set for 1987-88.

PROGRAM - George Menzies: The Program Workshop tomorrow will give the chapters new ideas for developing their 87-88 programs. The Society Speakers list has not been very helpful in chapter programing.

HISTORIAN - Cliff Thompson: Cliff Thompson asked that one representative from each chapter attend the Workshop tomorrow to learn about the need for a chapter historian and what to retain.

"R" IN ASHRAE - Morton Slone - Three years ago this committee was reconstituted and is coming along very well. Ten chapters now have refrigeration chairmen. Chairman Buckler asked for an accountability on monies collected from several chapters. Mort advised that Norman Nathan would provide details. (Note: all unused monies will be returned to the chapters).

GOVERNMENT AFFAIRS - Frank Vaculik: He outlined the format of the committee and the current activities.

(10) REGIONAL CHAIRMAN'S REPORT - George Buckler

1986-87 was a reasonably successful year for Region 2. Although member growth appeared to lag and most chapter activities did not seem to flourish, it was a year which reflected better regional cohesion and co-operation. It provided a level for encouragement of considerable improvement in SY 87-88.

(11) EXECUTIVE SESSION -

The Business Session moved into Executive Session. Phil Landray Member Region 2 Nominating chaired this portion of the meeting. Session lasted some 50 minutes compared to a 90 minute Caucus held the previous afternoon. Refer to comments later in Minutes.

(12) MOTIONS AND ACTION ITEMS

1. On motion by the Ottawa Valley Chapter and duly seconded it is moved

THAT Society modify the Chapter Changes Report to include both the new home and office telephone numbers based on the revised ASHRAE Journal Address Change Form and that this practice commence July 1, 1987. CARRIED.

*was carried thru not on time*

NOTE: Frank Coda reported that a new computer is being set up which could easily accommodate this motion by late July.

2. On motion by the Ottawa Valley Chapter and duly seconded it is moved

THAT Society add the position of Regional Vice-Chairman for Chapter Membership to each region and amend the PAOE point system to suit; and that this practice commence July 1, 1987.

DEFEATED.

PAGE 6.....

3. On motion by the Ottawa Valley Chapter and duly seconded it is moved

THAT Society provide receipts for Membership dues and this practice commence July 1, 1987. CARRIED.

NOTE: Both USA and Canadian governments will no longer accept cancelled cheques as receipts.

4. On motion by the Ottawa Valley Chapter and duly seconded it is moved

THAT Society identify costs in US funds on all membership invoices as well as receipts. This practice to commence July 1, 1987. DEFEATED.

NOTE: Frank Coda advised that Headquarters will handle this action item via the appropriate printing changes.

5. On motion by the Ottawa Valley Chapter and duly seconded it is moved

THAT Society revise its ASHRAE Research forms to indicate that Section 37 (1) applies to corporations only.

WITHDRAWN.(Refer to ARC)

NOTE: The ARC originally carried the words "individuals carrying on business in Canada". ARC and Headquarters will investigate a means to clarify this oversight on the existing forms.

6. On motion by the Ottawa Valley Chapter and duly seconded it is moved

THAT Society indicate the school affiliation and home address on the Monthly Chapter Changes Report and also copy the Membership Chairman on the membership acceptance letter to the student. CARRIED.

NOTE: Frank Coda advised that this can be accommodated with the new computer program being used by Headquarters.

*Just received  
some late  
effect.*

MEETING RECESSED AT 12 noon.

SECOND BUSINESS SESSION - reconvened at 2:30 p.m. following The Presidential Luncheon where President Fred Kohloss addressed the group.

MOTION AND ACTION ITEMS CONTINUED....

On motion by the Ottawa Valley Chapter and duly seconded it is moved

THAT Society allow student members to be given affiliate status since fees are now at a similar level. PAOE point criteria to be changed to suit. This practice to commence July 1, 1987. WITHDRAWN.

8. On motion by the Toronto Chapter and duly seconded it was moved THAT lunch be provided and included in the cost of registration for each full day of professional development seminar. CARRIED. *effective*

9. On motion by the Toronto Chapter and duly seconded it was moved THAT Society provide upon request at no cost to the chapters, two sets of mailing labels of all assigned members in that chapter and that this be provided at the start of each fiscal year. CARRIED. *done upon request*

10. On motion by the Toronto Chapter and duly seconded it was moved THAT Society publicize Chapter meeting Dates in each issue of INSIGHT. DEFEATED.

NOTE: It was recommended that the Regional Chairman list these dates in his Regional Newsletter.

11. On motion by the Hamilton Chapter and duly seconded it was moved THAT the expenses incurred at the 1986 Region 2 CRC be approved as distributed and that this expense statement be inserted in the CRC Minute Book and that an approved copy be forwarded to the Society Headquarters in Atlanta. CARRIED. ✓

NOTE: Surplus funds of \$31.11 were handed over to the Saguenay Lac St. Jean Chapter.

12. On motion by the Hamilton Chapter and duly seconded it was moved THAT the Regional Chairman insert the 1986 Region 2 Minutes in the Region 2 CRC Minute Book, followed by the 1986 CRC Conference Expense Statement (Hamilton Chapter held May, 1986 at Park Hotel in Niagara Falls. CARRIED. ✓

13. On motion by the Hamilton Chapter and duly seconded it was moved THAT \$4.00 per chapter member be approved as the Regional assessment for the year 1988 based on a chapter's local membership on January 1, 1988. CARRIED. ✓

NOTE: Chairman Buckler asked that the delegates refer to the resolution passed at the 1986 CRC

MOTION AND ACTION ITEMS continued.....

"That the chapter membership levy, for support of CRC be invoiced by the host chapter by December 31 for payment not later than 30 days prior to the start of the CRC with a 10% penalty for non-payment by that date".

14. On motion by the Hamilton Chapter and duly seconded it was moved

THAT London Canada Chapter host the 1988 meeting on May 18, 19, 20 and that the New Brunswick Chapter host the 1989 meeting on May 21, 22 and 23 and that the Montreal Chapter host the 1990 Region 2 CRC and that the Windsor Chapter host the 1991 Region 2 CRC. CARRIED. ✓

15. On motion by the Hamilton Chapter and duly seconded it was moved

THAT the \$16,000.00 budget for the 1988 Region 2 CRC as presented by John Kenney Conference General Chairman be approved.

DEFERRED.

NOTE: John Kenney indicated registration expenses for the 1988 CRC will be \$130.00 for ASHRAE member and companion.

16. On motion by the Hamilton Chapter and duly seconded it was moved

THAT each chapter budget annually for the visitation expenses of the Regional Chairman. WITHDRAWN.

NOTE: Michael Kerman read a motion from the 1985 Ottawa CRC which covered this exact motion which stated

"THAT the respective chapter being visited by the Region 2 Chairman shall bear the expenses for a maximum of one visit a year to a Chapter meeting to include accommodation (1 night in a hotel arranged by Chapter) and 2 meals (1 dinner at the Chapter Meeting and 1 breakfast!"

17. On recommendation by the Hamilton Chapter

THAT Chapter resolutions be submitted to the Regional Chairman before the CRC for distribution to the delegates. CARRIED. ✓

18. On recommendation by the Hamilton Chapter

THAT when requested a Society letter of acknowledgement should be prepared by Headquarters and signed by the Society President and sent to a member's employer to increase employer awareness of an employee's ASHRAE activities. CARRIED.

MOTION AND ACTION ITEMS continued.....

19. On motion by the Montreal Chapter and duly seconded it was moved

THAT Society provide funding in the form of \$3,000.00 US to underwrite publication costs for a French translated Manual for Chapter operations.

CARRIED.

(13) OLD BUSINESS

Phil Landray Region 2 Nominating Committee reported that both a Caucus and Executive Session were held and many names have been brought forward. Unlike other years, the Chapters Delegate and Alternate as well as the Nominating Committee did not receive instructions for these sessions. As well, the form to be filled in during Executive Session is significantly out of date. It also contains information which is not appropriate for Executive Session. He recommended that the Society Nominating Committee revise this form as well as offer training for the Regional Nominating Members to insure effective Executive Sessions.

President Elect Burroughs advised that he would refer these items to the Society Nominating Committee Chairman.

(14) NEW BUSINESS

Mr. Michael Kerman from the Halifax Chapter commented on the following subjects:

1. The Technical University of Nova Scotia has a continuing education department which conducts seminars throughout Canada. Mr. Kerman then questioned involvement.
2. The Federal Dept. of Mines and Energy Task Force co-ordinated a nation task force to assist development of energy programs in each Province. The Halifax Chapter encourages participation by all chapters on these Provincial groups.
3. A series of technical booklets have been prepared by the Federal Dept. of Mines and Energy. Each chapter should use these books to supplement their local seminars. The Federal Dept. will also co-sponsor seminars.

(15) CLOSING COMMENTS

John Kenney moved that this group express our thanks to Saguenay Lac St. Jean Chapter for the excellent CRC they hosted

PAGE 10.....

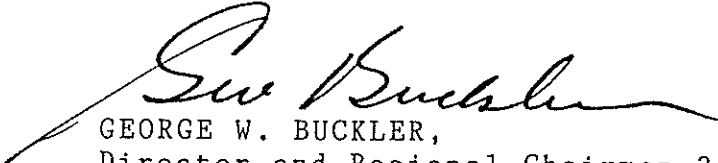
CLOSING COMMENTS Continued.....

and the fellowship provided along with the outstanding frivolity which accompanied the Business Sessions. This was unanimously endorsed by all present.

(16) CLOSE OF BUSINESS SESSION

Chairman Buckler called for a motion to adjourn which was duly made and seconded. CARRIED.

MEETING ADJOURNED AT 6:00 P.M.

  
GEORGE W. BUCKLER,  
Director and Regional Chairman 2

## AWARDS

Awards were presented by President Kohloss and President-Elect Burroughs during the Presidential Luncheon, Banquet and the Friday Luncheon on follows:

- P.A.O.E. - Ottawa Valley Chapter (Star Award)
- Windsor Chapter
- Quebec Chapter
- Toronto Chapter

Regional Award of Merit - George Buckler  
- Lloyd Algie  
- Francois Langlais

Membership Ribbon Awards - Windsor Chapter  
- Ottawa Valley Chapter

Energy Awards - B. Tambllyn, Toronto Chapter 1st Place, Cat. 1  
B. Hamilton, Toronto Chapter 2nd place Cat. 1  
A. Hendry, ) Halifax Chapter, tie 3rd Place Cat. 1  
A. Jones, }  
E. Butterworth; Ottawa Chapter, 1st Place Cat 2  
J. Bisset, London Chapter, 2nd place, Cat. 2  
D. Fortin, Quebec Chapter, 1st place Cat. 4  
M. Perlman, Toronto Chapter, 1st place, Cat. 5  
L. Bertrand, Montreal Chapter, 2nd Place, Cat. 5

Research Awards - Windsor Chapter  
Chicoutimi Chapter  
\* (Note: other winning chapters were presented with certificates during the Regional Chairman's official visits).

Chapter Award of Merit - Albert Bourdages  
- Bernard Cauchon

Certificate of Appreciation - Ray Young, retiring V.C. of Membership



ATTENDANCE

May 13, 1987

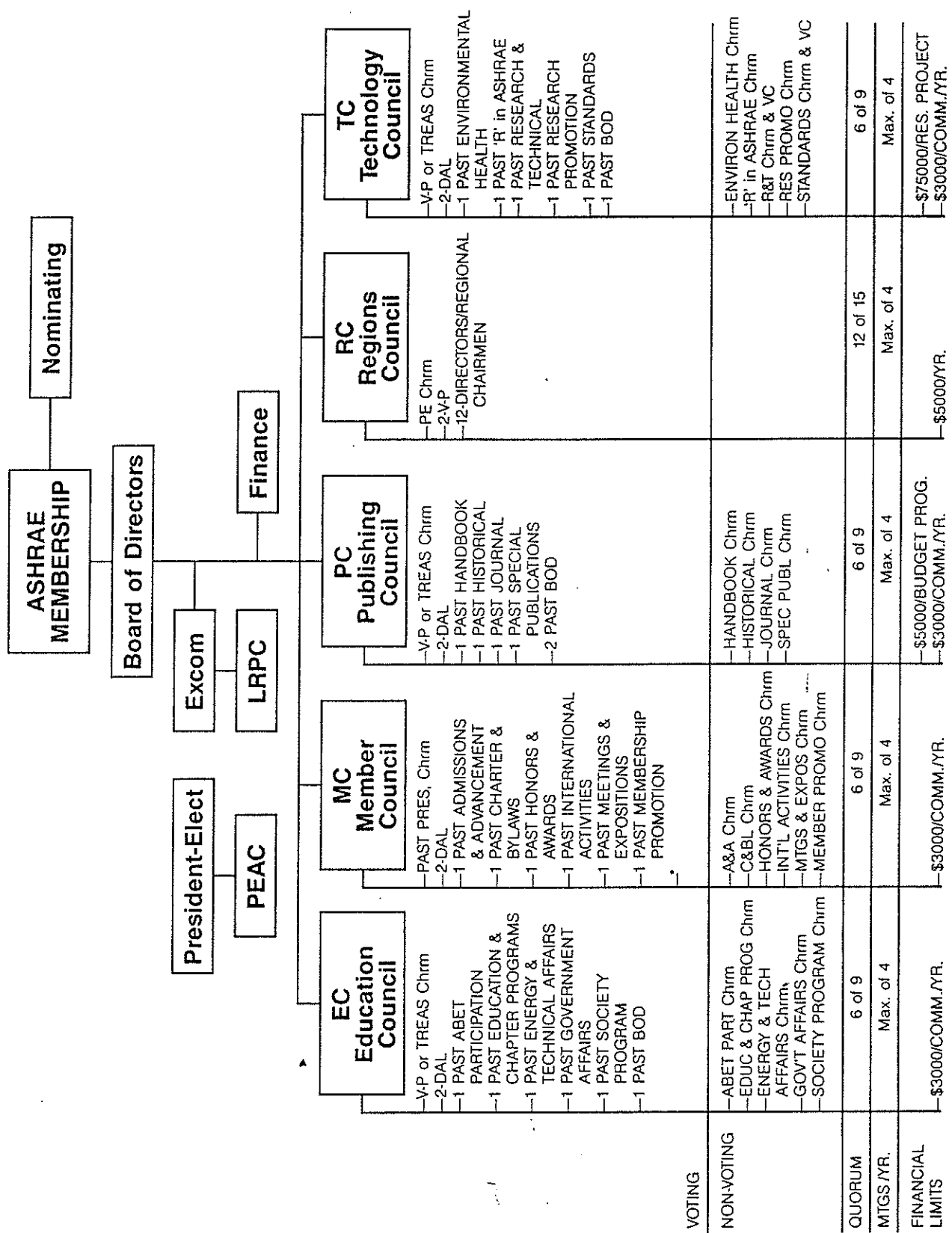
<u>NAME</u>	<u>POSITION</u>
Gary Scott	Delegate - Halifax
Victor Belliveau	Alternate - Halifax
Cliff Schemmer	Delegate - Hamilton
Gary Romagnoli	Alternate - Hamilton
John Kenney	Delegate - London
Peter Golem	Alternate - London
Elie W. Shama	Delegate - Montreal
Laurier Nichols	Alternate - Montreal
Irwin MacDonald	Delegate - New Brunswick
Gerry Waselynychuk	Alternate - New Brunswick
Simon Jol	Delegate - Ottawa Valley
Paul B. Baker	Alternate - Ottawa Valley
Robert Marcotte	Delegate - La Ville de Quebec
Jean Luc Morin	Alternate - La Ville de Quebec
Daniel Boivin	Delegate - Saguenay Lac St. Jean
Denis Rivard	Alternate - Saguenay Lac St. Jean
Jim Ovens	Delegate - Toronto
Howard Wheatley	Alternate - Toronto
Lou Panontin	Delegate - Windsor
Chris Hales	Alternate - Windsor
Lloyd Algie	Observer - Delegate - Mississauga
George Buckler	DRC - Hamilton
Paul R. Conrad	DAL - Halifax
Glenn Parks	Chairman - Chicoutimi
H.E. Burroughs	Society President-Elect - Atlanta
Frank M. Coda	Exec. Dir. ASHRAE Staff, Atlanta
Allen Hanley	Montreal
M. Gerard Doyle	B.ofG.- Halifax
Michael Kerman	President - Halifax
Doug Rafuse	Energy - Halifax
George Menzies	Prog. Com. Region 2 - Hamilton
Dalton McIntyre	Nom. Com Alt. - Ottawa Valley
Darryl K. Boyce	V.C. Education - London
Azarias Servant	V.C. Energy, Quebec
Bill Chadwick	V.C. Research Prom. - Toronto
Morton Slone	Regional "R" in ASHRAE- Montreal
Cliff Thompson	President 86/87, Toronto
Jacques Gaudet	Chicoutimi
John Thorne	Membership 87/88, Hamilton
Gary Blue	Membership 87/88, New Brunswick
Jeff Warren	"R" in ASHRAE - Toronto
Joe English	Membership - Toronto
Danny Castellan	Research - Windsor
Tom Markowitz	Education - Toronto
Jean Roch Gagnon	Chicoutimi, CRC Secretary
Remi Laprise	Energy, Ottawa Valley
Ray Young	V.C. Membership, Ottawa Valley
Phil Landray	Nom. Com. Region 2, Toronto

ATTENDANCE

May 14, 1987

Gary Scott	Delegate - Halifax
Victor Belliveau	Alternate - Halifax
Cliff Schemmer	Delegate - Hamilton
Gary Romagnoli	Alternate - Hamilton
John Kenney	Delegate - London
Peter Golem	Alternate - London
Elie W. Shama	Delegate - Montreal
Laurier Nichols	Alternate - Montreal
Irwin MacDonald	Delegate - New Brunswick
Simon Jol	Delegate - Ottawa Valley
Paul Baker	Alternate - Ottawa Valley
Robert Marcotte	Delegate - Ville de Quebec
Jean Luc Morin	Alternate - Ville de Quebec
Daniel Boivin	Delegate - Saguenay Lac St. Jean
Denis Rivard	Alternate - Saguenay Lac St. Jean
Jim Ovens	Delegate - Toronto
Howard Wheatley	Alternate - Toronto
Lou E. Panontin	Delegate - Windsor
Chris Hales	Alternate - Windsor
Lloyd Algie	Observer - Delegate - Mississauga
Tom Markowitz	Education - Toronto
Bill Bartlett	Energy Mgmt. - Toronto
Bernard Ratledge	Alternate - Mississauga
Jeff Warren	"R" in ASHRAE - Toronto
Paul Conrad	DAL - Halifax
Remi Laprise	Energy Mgmt. Ottawa Valley
Allen Hanley	President - Montreal
Harry Topikian	Education - Montreal
Michael Kerman	President - Halifax
M. Gerard Doyle	B.ofG. - Halifax
Doug Rafuse	Energy Mgmt. - Halifax
Frank Vaculik	Govt. Affairs, Ottawa Valley
George Menzies	Prog. Com. - Hamilton
Phil Landray	Nominating Com. - Toronto
Dalton McIntyre	Nominating Com. Ottawa Valley
Darryl K. Boyce	V.C. Education - London
A. Servant	V.C. Energy - Quebec
Ray Young	V.C. Membership, Ottawa Valley
Bill Chadwick	V.C. Research Prom. Toronto
Morton Slone	"R" in ASHRAE - Montreal
Cliff Thompson	President 86/87 - Toronto
Dieter Heins	Treasurer - Toronto
John Thorne	Membership 87/88 - Hamilton
Frank Coda	ASHRAE Staff, Exec. Dir. - Atlanta
H.E. Barney Burroughs *	Society President-Elect - Atlanta
Fred Kohloss	Society President - Hawaii
George Buckler	DRC - Hamilton
Glenn Parks	Chairman, CRC, Saguenay, Lac St. Jean
Camil Gerard	VP CRC 1987 & acting secre. Saguenay, Lac St. Je
Joe English	Membership - Toronto
Byron Landry	Membership - Ottawa Valley
Danny A. Castellan	Research - Windsor

# SOCIETY COUNCIL & COMMITTEE STRUCTURE



\*At least 1 past committee member should also have been a member of the Board.



August 12th, 1986

1986 CRC AUDITOR'S REPORT


We have examined the attached CRC '86' committee treasurer's financial report and all the necessary substantiating documents and statements. Our examination was made in what we considered to be generally accepted auditing standards, and accordingly included such tests and other procedures as we considered necessary in the circumstances.

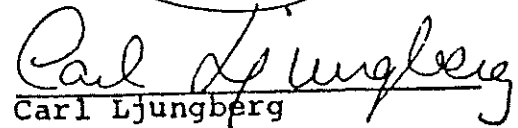
In our opinion, this financial statement presents fairly the finances of the committee.

Since this report finalizes the financial activities of the committee, we recommend that the report should not be released to Society until the approximately \$1,000.00 outstanding accounts receivable is settled.

We noted that the payment of the Regional Chairman's hotel expenses was not authorized by the committee. Since it was authorized to be paid from Hamilton Chapter General Accounts we merely note its incorrect location on the records.

Audit Committee:

  
\_\_\_\_\_  
R. C. Jacobs

  
\_\_\_\_\_  
Carl Ljungberg

  
\_\_\_\_\_  
R. J. Morris

CRC '86 Committee  
FINANCIAL REPORT

RECEIPTS

Full Registration - Members 64	3,758.29	
Spouses 35	1,622.62	
		5,380.91
Partial Registration -Reception	24.00	
Thursday Breakfast	6.00	
President's Luncheon	70.00	
Dinner/Entertainment	975.00	
Friday Breakfast	30.00	
Friday Lunch	60.00	
		1,165.00
Assessments - Ville de Quebec	577.50	
New Brunswick	270.00	
Toronto	1,200.00	
London	188.50	
Ottawa	555.00	
Montreal	1,215.00	
Hamilton	412.00	
Windsor	161.25	
Saguenay Lac St.Jean	000.00	
		4,579.75
Sponsors-		
Coffee Breaks - Joe Vassallo	60.00	
Hospitality Room - Johnson Controls	150.00	
		210.00
Advances - ASHRAE Hamilton Chapter	3,000.00	
Society " " "	2,053.83	
		5,053.83
Refund - Wine	5.00	
Sponsors - RHEEM - Ladies Wine Tour		100.00
Sponsors - Carrier/Otis		500.00
		16,994.49
Balance owing chapter #140		140.00
Balance		17,134.49
Total Costs		<u>17,103.38</u>
Profit passed on to Chapter #140		31.11

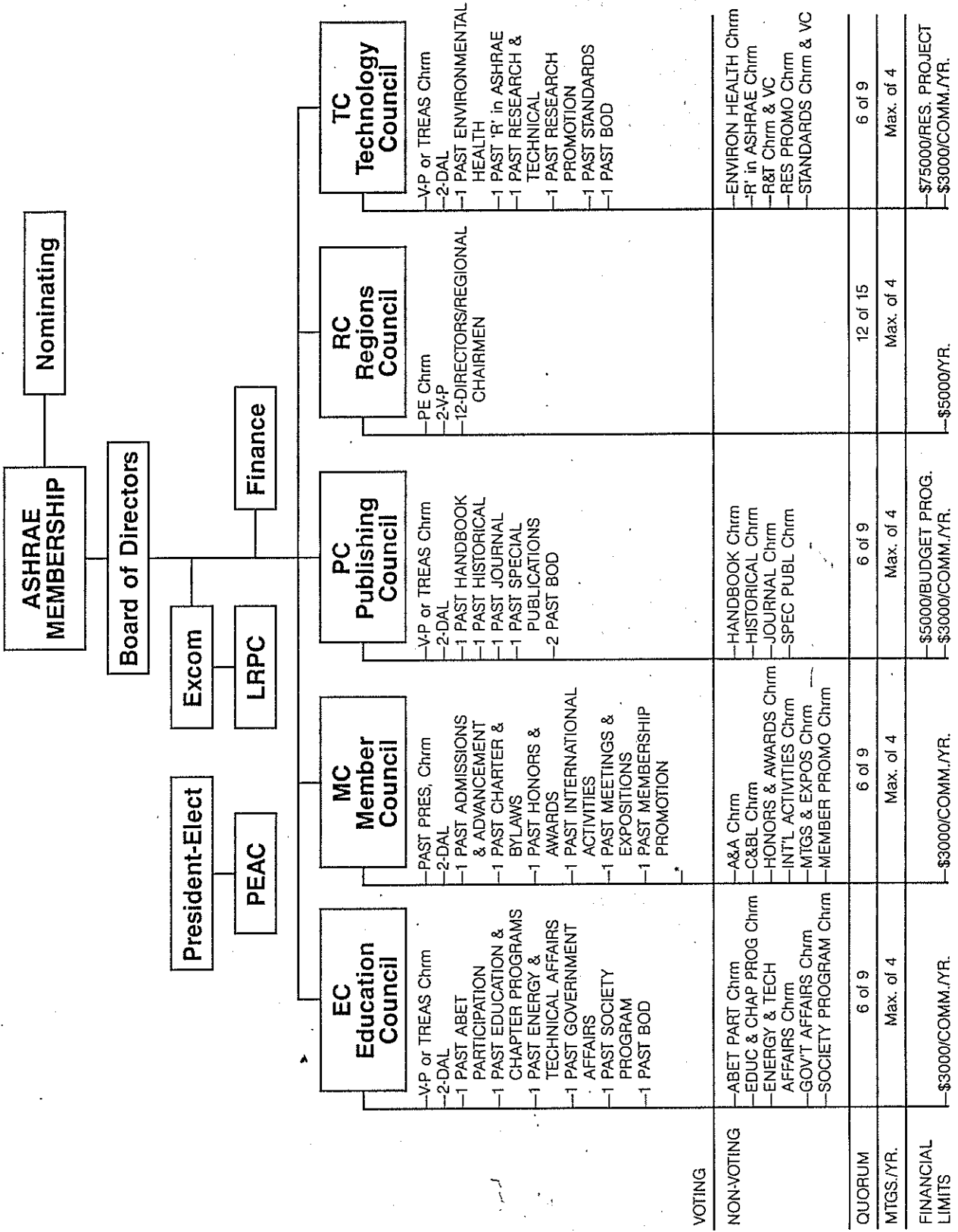
HOTEL ACCOMMODATION

May 14	-	48 rooms/suites
May 15	-	68 rooms/suites

DISBURSEMENTS

CHEQUE NO.	ACCOUNT NAME	DETAILS	
	Park Hotel	Deposit (Hasmilton)	200.00
1	Park Hotel	Executive Dinner	85.00
2	Acme Harpoon Co.	Advance	750.00
3	Suzy Menzies	Artwork for Program	200.00
4	Suzy Menzies	Questionnaire	46.92
5	David Rasmussen	Badges	19.42
6	Canadian Speedrite	Photocopies	75.40
7	Jack Keon	Advance on Wine	70.00
8	Acme Harpoon Co.	Balance of Payment	1,000.00
9	Refunds (Errors)	Ville de Quebec	303.75
10	"	Sonseng (J.W.English)	62.00
11	"	Dieter Heins	55.00
12	"	Dalton J. McIntyre	10.00
13	"	Cliff Schemmer	84.00
14	Hillebrand Estates	Wine Tour Refreshments	63.00
15	Double Deck Tours	2 days at \$250.00	500.00
16	The Great Canadian Sign Company		107.00
17	G.E. Menzies	Photos	76.18
18	W. Gary Romagnoli	Hospitality Rm.Supplies	56.20
19	G.W. Buckler	Hotel Expenses	215.79 *
20	Niagara Plbg. Supplies	Stenographic Serv.	200.34
21	Hoco Ltd. Park Hotel	See Attached	5,543.74
22	G.W. Buckler	VIP Gifts	27.25
23	ASHRAE Hamilton Chapter	- repayment	3,000.00
24	Frank Spina	CRC Exec. Mtg. Expenses	304.75
25	Carl Ljungberg - Acme Harpoon, Ultrastage, etc.		903.33
26	Gail Menzies - Stenographic Services		25.00
27	MCC Powers (Ottawa)	Jill Dugan No Show Refund	45.00
28	Merit Mech (Halifax)	Gary Brown No Show "	100.00
29	Southn Mech. Windsor)	L. Panontin " "	55.00
30	Peter Bevan Limited	CRC'86 Comm. Treasurer Exp.	251.67
31	ASHRAE Hamilton Chapter	- Sponsors'Donations	810.00
32	ASHRAE Hamilton Chapter	- CRC Expenses	1,857.64
			<u>17,103.38</u>

# SOCIETY COUNCIL & COMMITTEE STRUCTURE



\*At least 1 past committee member should also have been a member of the Board.

RECEIVED JUN 10 1987

Chicoutimi, May 27, 1987.

1987 C.R.C AUDITOR'S REPORT

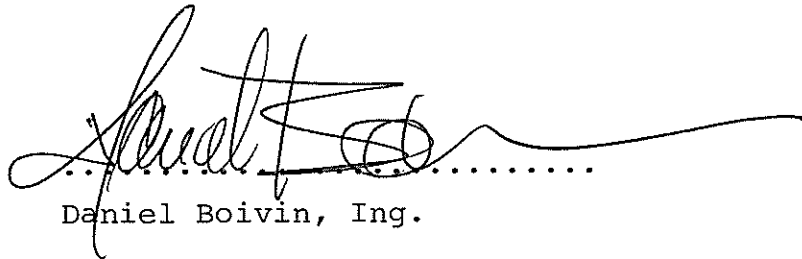
We have examined the attached C.R.C "87" committee treasurer's financial report and all the necessary substantiating documents and statements.

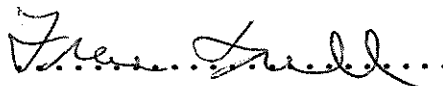

In our opinion, every document matches with the report from the 87 C.R.C committee treasurer.

There are only \$ 349.75 left to come from the London and Windsor chapter. This amount will be handed over to the Saguenay chapter, whom advanced \$ 2,000.00 for the 1987 C.R.C.

May we proudly salute a job well done by the 1987 C.R.C. committee.

Audit Committee :

  
.....  
Daniel Boivin, Ing.

 .....   
France Tremblay, ~~t. Se. A.~~ Denis Rivard, Ing.



## ÉTAT DE COMPTE

Chicoutimi, P.Q. .... 24 mai ..... 19 87

▪ Congrès A.S.H.R.A.E.

▪ a/s M. Glen Parks

Doit à:

HÔTEL · MOTEL  
**LE MONTAGNAIS**  
 PLACE DES CONGRÈS



1080 Boul. Talbot, Chicoutimi, P.Q. - G7H 4B6 - Tél.: (418) 543-1521

DATE	NO FACTURE	DÉBIT	CRÉDIT	BALANCE DUE
	<b>BALANCE DU MOIS PRÉCÉDENT</b>			
14/5/87	café, jus et croissants	89.50		
	taxe 10%	8.95		
	service 15%	13.43		
	55 déjeuners à \$4.00	220.00 ✓		
	taxe 10%	22.00		
	service 15%	33.00		
	137 dîners à \$10.00	1370.00 ✓		
	taxe 10%	137.00		
	service 15%	205.50		
	161 soupers à \$15.75 ✓	2535.75 ✓		
	taxe 10%	253.58		
	service 15%	380.36		
	estrade	100.00		
	suite-hospitalité	200.00		
15/5/87	café, jus et croissants ✓	75.20 ✓		
	taxe 10%	7.52		
	service 15%	11.28		
	57 déjeuners à \$4.00	228.00 ✓		
	taxe 10%	22.80		
	service 15%	34.20		
	81 dîners à \$10.25 -	830.25		
	taxe 10%	83.03		
	service 15% ✓	124.54		
	No K 48112	328.50		
	No K 48187	142.75		
	No K 48115	391.65		
				<b>7848.79</b>

24% annuellement ou 2% d'administration par mois sur tout compte passé dû.

June 10, 1987

Mr. Glenn Parks  
Ethane Company of Canada Inc.  
526 Marcel Portal  
CHICOUTIMI, P. Q.  
G7J 4P2

Dear Glenn:

I would be quite remiss if I did not personally acknowledge the fine job you and your committee did in pulling together a great CRC.

Region II is on a move forward and the smooth organization of this important meeting left little to be desired.

I look forward to seeing you again later in the Fall when I visit the Saguenay Lac St-Jean Chapter.

Best Regards.

George W. Buckler  
Director & Regional Chairman II

GWB:sm

cc: Mr. F. Kohloss  
Mr. M. Ouellet